

Φ240mm

INSTALLATION INSTRUCTIONS AND HOLE-CUTTING TEMPLATE

TDX 8 INCH CEILING EXHAUST FAN AND LIGHT

Dear customers:

Thank you for selecting this TDX Ceiling Exhaust Fan.

Please read all instructions before commencing installation.

IMPORTANT: The TDX Ceiling Exhaust Fan must be installed to comply with the appropriate council regulations and the Australian and New Zealand wiring rules AS/NZS3000:2000 or latest edition thereof.

This ceiling exhaust fan may only be installed by a licensed Electrician. All electrical connection and disconnection are to be performed by a licensed electrician.

The interconnecting cables required for installation of this appliance are not included, suitable cabling no lighter than ordinary duty cable rated at a minimum 10Amp load rating is to be used when installing/wiring this appliance.

WARNING

1. Use this unit only as described in this manual. Any other use not recommended by the manufacturer may cause fire, electric shock, or injury to persons. If you have questions, contact the manufacturer or local agent.
2. All wiring must be carried out by a licensed Electrician in accordance with all applicable National/local codes and standards. Also check with the local council regulations regarding the installation of exhaust fan and light.
3. Make sure the power is off before the installation.
4. When cutting into the wall, do not damage any electrical wiring and other hidden utilities.
5. The unit must be properly grounded.
6. For the purpose of avoiding any dangerous gas leaking into your bathroom, the ventiduct of the unit must not be laid together with the ventiduct of air-fueled water heater or other open-fire appliances into the same flue.
7. The unit must be isolated from the power by means of a plug or an all-pole disconnection switch with a contact separation of at least 3mm in each pole.
8. The power cable must stand a minimum 10A load.
9. This appliance is not intended for use by persons (including children) with reduced physical, sensory or mental capabilities, or lack of experience and knowledge, unless they have been given supervision or instructions concerning the use of the appliance by a person responsible for their safety.
Children should be supervised to ensure that they do not play with the appliance.

IMPORTANT CONSIDERATIONS BEFORE INSTALLING

A few minutes of planning can make a big difference to the installation time and your overall satisfaction with the unit.

1. For the exhaust fan to work efficiently, replacement air with a volume equivalent to what is being extracted must be able to enter the room. In general this air would be drawn under the door or through a slightly open window. If the room is airtight, the fan will function poorly.
2. This product is designed for installation in a flat ceiling only. Do not mount it on a sloping ceiling or a vertical wall.
3. Before commencing any cutting, check in the ceiling space that there are no obstructions such as ceiling joists and that there is sufficient height clearance for the housing, also check the electrical wiring if it can be routed from the wall switch to the mounting location.

INSTALLATION

1. Cutting a vent (when required)

1)For installation where external venting is required, locate a suitable location in either the roof or exterior wall to vent out the exhaust fan air/steam and cut out a 130mm Hole.

2)Ducting

Put one end of a 125mm diameter ventiduct (not supplied) into the vent hold and seal the space around the hole using a suitable sealant and coving where necessary.(Figure 1)

3)Location

For the fan to work efficiently, there should be a minimum height of 2m from the fascia to the ground.

4)Prepare the ceiling

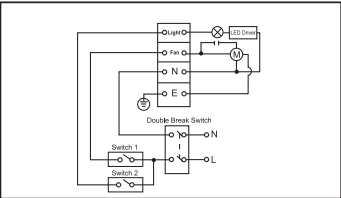
Using this instruction card as a template, mark the ceiling with a pencil outline and cut out a hole in the ceiling at the chosen area.

Make sure the distances between the edges and walls are no less than 250mm.

A minimum of 200mm clearance within the ceiling is required.(Figure 2) Ensure that the intended hole will have suitable room for the unit and will not fall on joists or not fit in the headroom provided.

5)Wiring (Ensure the power is switched OFF before carrying out any wiring connection)

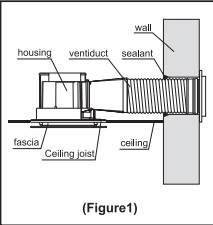
Wiring the unit as the wiring diagram. (Figure 3)
Refer to the warranty conditions if hardwiring is chosen for the installation.



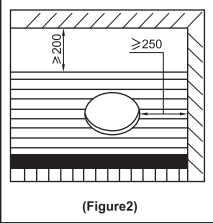
(Figure 3)

6)Attaching and alignment of spigot.

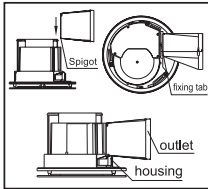
Slide the spigot (included) onto the motor body(Fig 4) and clip the fixing tab into the slot to secure in position. Choose an optimal direction in relation to your exhaust air outlet making sure it will not be impeded by joists or rafters once inside the ceiling space.



(Figure1)



(Figure2)



(Figure 4)

Read and save these instructions!

Please take this card as hole cutting template Φ240mm.

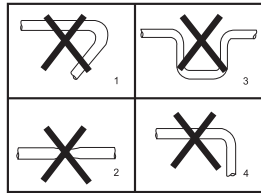
Φ240mm

INSTALLATION INSTRUCTIONS AND HOLE-CUTTING TEMPLATE

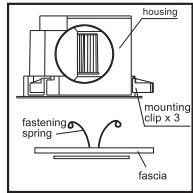
Note: Try to keep the redundant wire away from the housing.

Note: The shortest, smooth surface ventiduct with the least elbows will provide optimum fan performance. Please keep the ventiduct as straight as possible.(Figure 5)

Note: Assume the 3 mounting clips are close to the body so that the unit can be easily pushed into the hole in the ceiling.(Figure 6)



(Figure 5)

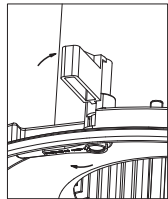


(Figure 6)

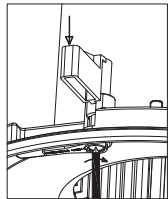
Note: It is highly recommended that the interconnected wire be laid into the wall beforehand for the purpose of keeping an integrated look in the bathroom.

7)Fasten the unit on the ceiling

After inserting the fan assembly into the ceiling, rotate the swing clips to hold fan body in place(Figure 7). Tighten screws so mounting clips clap onto the ceiling board(Figure 8).



(Figure 7)



(Figure 8)

8)Replace the fascia

Connect the LED plug on fascia to motor body then put the two springs on the fascia into the two slots in the unit.

USE

1)Turn on/off the switch button to make the unit run or stop.

2)Running the fan can exhaust odours and steam in a quick and efficient way.

Note: Shut off power urgently when any abnormalities occur in operation, then call your local licensed electrician for inspection and any necessary service work.

Note: It is absolutely prohibited to insert a finger or a thin bar to the fascia to avoid being injured or damaging the unit.

Note: The unit must not be installed at a place that suffers from severe water leakage.

MAINTENANCE

1)Shut off power before cleaning or maintenance.

2)Wipe fascia with care using a soft cloth soaked with water or neutral detergent. Ensure the motor or other electrical parts can not touch the water.

3)Reattach the fascia only when it is dry thoroughly.

WARRANTY

This TDX Ceiling Exhaust Fan is warranted against defects in manufacturing and workmanship for a period of 3 years. The warranty does not extend to installation of the unit or any associated wiring or any damage caused via installation or wiring. The installation must be conducted by a licensed electrician and a suitable certificate of safety is to be issued by the electrician who installed the unit. Warranty claims will be voided unless a certificate of safety can be produced when required, prior to service or repair. Please keep and present the original invoice to your service agent for warranty services.

This warranty does not cover damage or loss caused by:

- 1)Any consequential losses arising from incorrect installation or operation or maintenance of this product.
- 2)Any consequential losses arising from incorrect wiring of this product.
- 3)Any modifications or changes made to the unit, other than those recommended by the manufacturer.

MAIN TECHNICAL PARAMETERS

Input	Power	Motor	Light	Noise	Air Volume	Hole-cutting Size	Model No
220V-240V~50Hz	55W	45W	10W LED	43dB	290m³/h*	Φ 240mm	730358

The airflow data is gathered in accordance with International industry standard ISO 5801.

• ISO (International Organisation for Standardization): An International standard tested under strict guidelines providing accurate data and commonly used in the professional specifying market.

LIST OF COMPONENTS SUPPLIED

Main body with fascia	1 piece each
Installation instruction and cutout template	1 piece

Fill out the following details and file along with your purchase receipt and certificate of safety.

TDX 8 INCH CEILING EXHAUST FAN AND LIGHT

Model No:

Purchased from:

Date of purchase:

Read and save these instructions!

Please take this card as hole cutting template Φ240mm.