

TDX

Infrared Heater

740130

IMPORTANT INSTALLATION AND WARRANTY INSTRUCTIONS

Thank you and congratulations on your purchase of the TXD infrared tube heater.

Please read these instructions carefully before installing and using the product. Keep the instructions handy for future reference

Electrical mounted must only be done by a licensed electrician and a "Certificate of Compliance" must be issued completion of the installation.

LOCATION

The unit must be located and installed in accordance with AS/ NZS60335 and local building codes relating to damp situations.

The unit can be installed in any room that requires direct radiant heating such as Dining room, outdoor courtyard, balcony, living room, etc. The unit can be installed on the wall.

POWER

AC 220-240V/50Hz electrical supply is required. All electrical work must be carried out in accordance with AS/ NZS60335 or latest edition thereof, and local building codes and regulations. Ensure that supply power is isolated before commencing installation.

Mounting

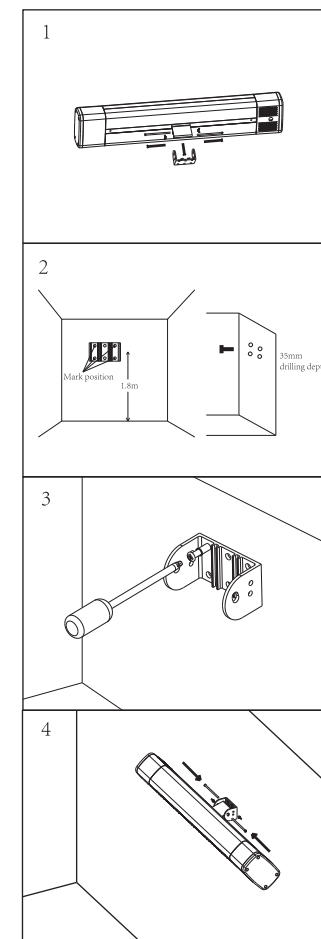
1. Confirm the installation location: this product must be installed on the wall above 1.8 meters from the ground, and must be kept away from flammable materials.

2. Drill the mounting holes: remove the mounting bracket from the product. According to the hole position of the fixed bracket, mark the punching point with a marker pen. And drill with a $\phi 8\text{mm}$ drill bit at the mark position, and the drilling depth is more than 35mm

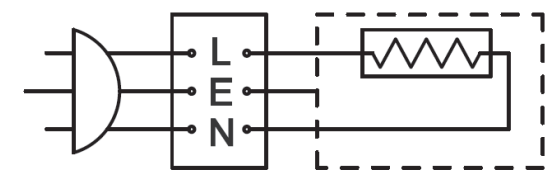
3. Fix the mounting bracket: the drilling position corresponds to the bracket hole position on the wall panel, then drive the expansion rubber plug into the wall, and use self-tapping screws ST5*40 to fix the mounting bracket on the wall.

4. Fix the heater: make the product connect the fixing bracket, adjust the appropriate angle, and fix the heater with screws and nuts. (The fixing screws can be installed in different holes, and the maximum adjustment angle is 30 degrees. The adjustable angle of the wing nut end slot is 10 degrees. Through the cooperation of the double holes and the wing nut end slot, the user can adjust the heater angle to meet different heating requirement.)

5. Post-installation inspection: after the installation is completed, confirm that the product is fixed and tightened



Circuit Diagram



220-240V~50Hz

MAIN TECHNICAL PARAMETERS

Model No.	Voltage(V)	Heat(W)	Hertz(HZ)	Diemension (WxDxH mm)	Weight(KG)
740130	220-240	2000	50	869x100x160	2.5

CARE AND MAINTENANCE

Attention!

Careful and regular maintenance of your heater considering our instructions assume great importance so as to attain a long efficient operation of your appliance.

- 1. Check the filthiness of the Reflector and Heating pipe at least once a month. If necessary, apply cleaning and maintenance instructions.
- 2. The number of checks may be increased considering the amount of the dust in the environment.
- 3. Check the deformation of the Reflector, Wire and Frame visually while cleaning the appliance. In case of deformation, consult to your technical service.
- 4. Check the Power Cord and Plug visually while cleaning the appliance. In case of deformation, consult to your technical service.

Replacement Heat Tube

Heat tube: the heat tube must only be replaced with 2000watts(maximum) globes.

Size: 610mm with lead line